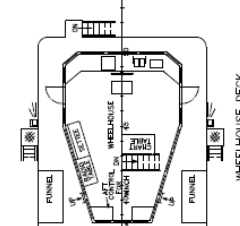


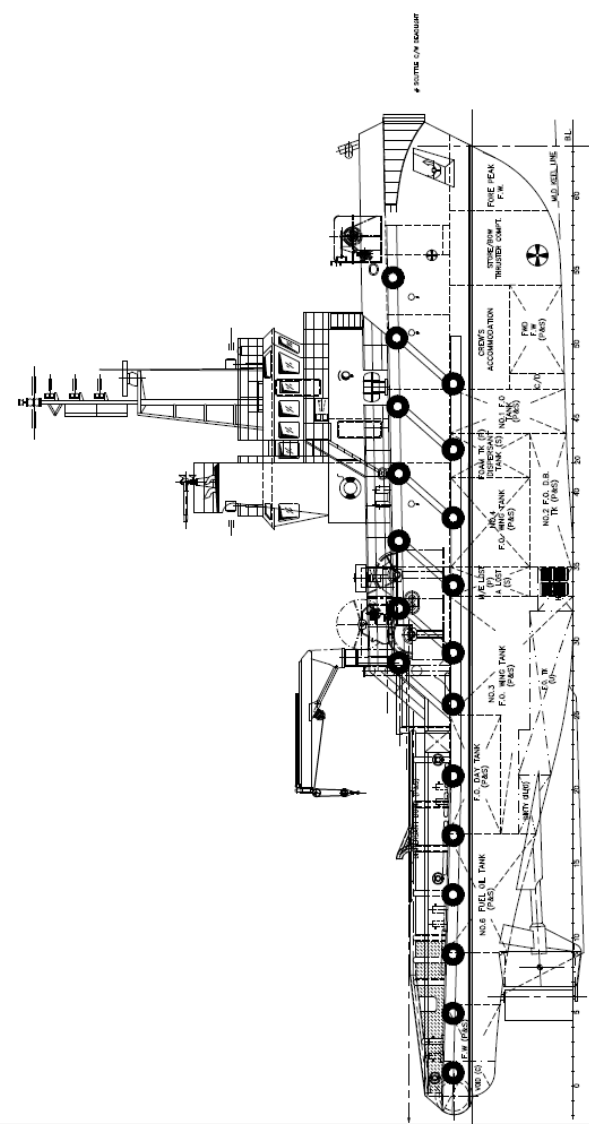
STERN VIEW

PRINCIPAL PARTICULARS

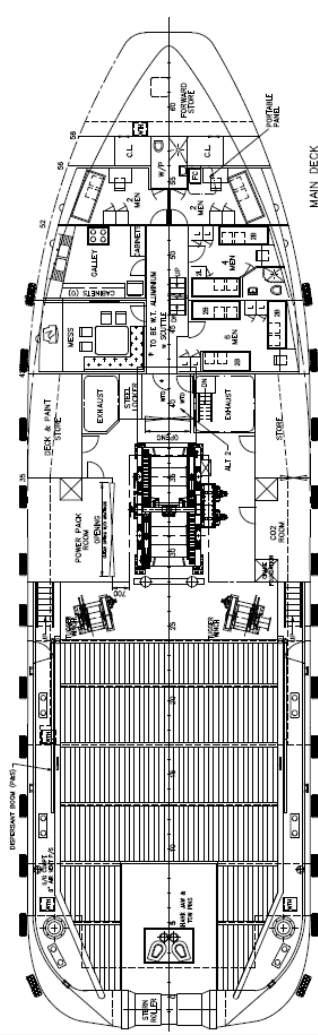
LENGTH O.A.	40.00 m
LENGTH W.L.	38.00 m
LENGTH B.P.	36.80 m
BEAM MLD.	11.40 m
DEPTH MLD.	4.95 m
COMPLEMENT	16 MEN



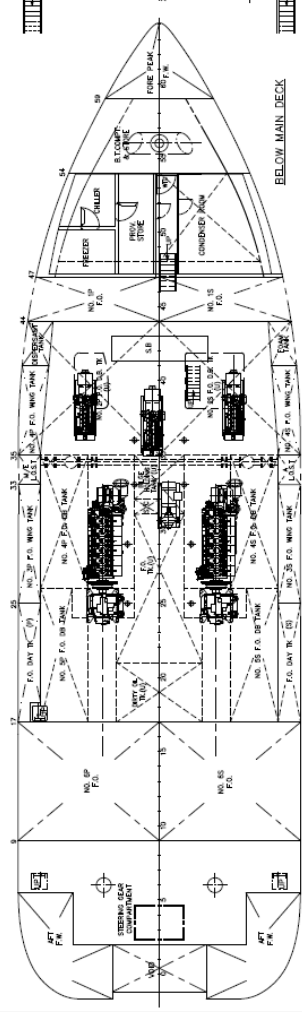
WHEELHOUSE DECK



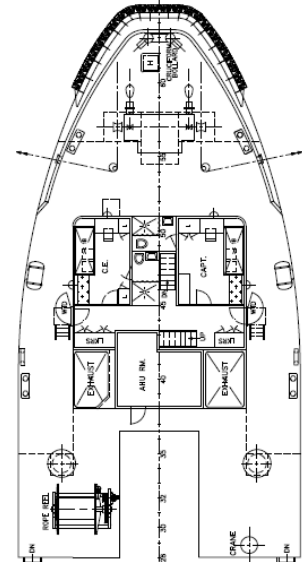
OUTBOARD PROFILE



MAIN DECK



BELOW MAIN DECK



FORECASTLE DECK

APPROVED BY: ABS  
DATE: 14-10-06  
12-11-08

22/07/08	F	MOD TO CLASS COMMENTS (REF 12.11.08)	US
22/07/08	E	OPEN INBOARD POWER TAKE ROOM (BID)	US
22/07/08	D	REINFORCED DECKS ACCOMMODATION	SHM
22/07/08	C	REINFORCED DECKS ACCOMMODATION	SHM
22/07/08	B	CHANGE POSITION OF COX ROOM & CHIMNEY TAKE ROOM	SHM
5/8/08	A	MOD. AS BEING PROGRESSED	BY
DATE	REV	MODIFICATION	BY
SHIP:			
TITLE:			
General Arrangement			
OWNER	LUSH MARINE PTE LTD		
BUILDER	SHANGHAI SHIPYARD		
CLASS	ABS		
CLASS	MARK NO. 7027/2008 & 39		
CONAN WU & ASSOCIATES			
MARINE ARCHITECTS			
NO. 1000, SOUTH BEACH, SINGAPORE			
TEL: (65) 6337-1188 FAX: (65) 6337-1189			
TEL: (86) 21-5438-8888 FAX: (86) 21-5438-8889			
TEL: (86) 21-5438-8888 FAX: (86) 21-5438-8889			
DRAWN	CHECKED	IMPROVED	SCALE
DATE	DATE	DATE	DATE
			1:100
			C-44.31/C-1
			E

THIS DRAWING AND THE INFORMATION CONTAINED HEREIN ARE ISSUED ON THE UNDERSTANDING THAT THE USER SHALL BE RESPONSIBLE FOR OBTAINING ALL NECESSARY PERMITS AND APPROVALS FROM THE APPROPRIATE AUTHORITIES.