



SDS 38

TUG BOAT
2 x 400 HP

PRINCIPAL PARTICULARS:

Year of built	: 2004
Classification	: BKI
Flag / Registry	: Indonesia/Jakarta
Call Sign	: YDA 4069
Construction	: Steel

DIMENSIONS :

Length	: 20.25 m
Breadth	: 6.10 m
Depth	: 2.75 m
Draft	: 2.20 m
Gross / Net Tonnage	: 88 / 27 Tons

MACHINERIES :

Main Engine	: 2 x 400 HP @ 2100 Rpm Cummins NTA 855 M
Gearbox	: 2 x Reintjes WAF 464 L (4.577 : 1)
Generator	: 2 x 25 kW Yanmar 4TNE 98 - GIA
Propulsion	: Twin Screw Fixed Pitch

TANK CAPACITIES :

Fuel Oil	: 34 m ³
Fresh Water	: 30 m ³

COMMUNICATION AND NAVIGATION :

SSB	: Icom M-718
GPS	: Furuno GP-32
VHF	: Furuno FM-2710
Radar	: Furuno 1721 Mark 2
Echo Sounder	: Furuno FCV-667
Standard Compass	: Daiko Keiki Seisakusho / T-1508

OTHERS :

Bollard Pull	: 21 Tons Pull
Anchor Winch	: 1 x 5 Tons Electric Anchor Windlass With 2 stockless Anchor 200 kg each, Ø 15 mm U2 wire rope
Life Saving and Fire Fighting Equipments	: As per SOLAS requirements

01.07.11 – Rev.0

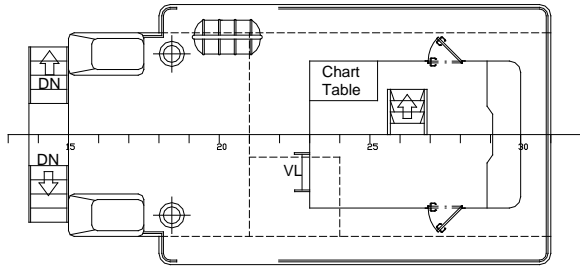
Note : The information shown are given in good faith without any warranties or conditions, express or implied, statutory or otherwise.



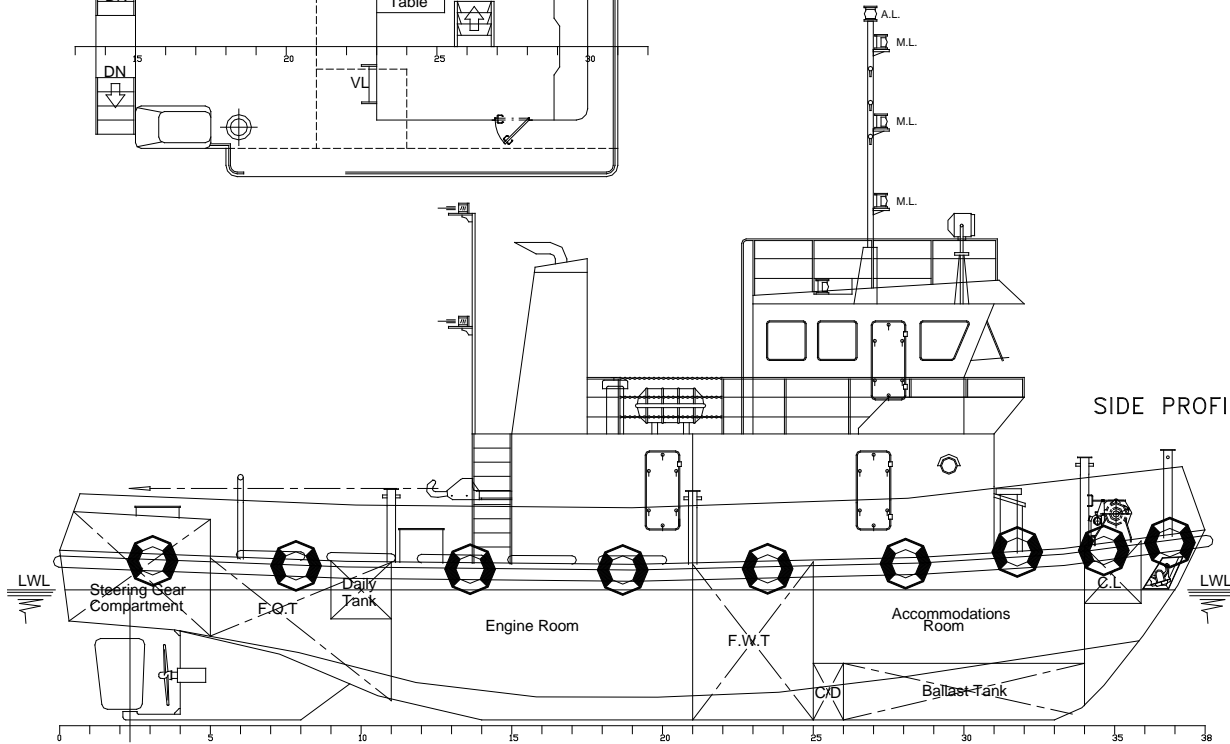
ISM Code & ISPS
Compliant

TB SDS 38

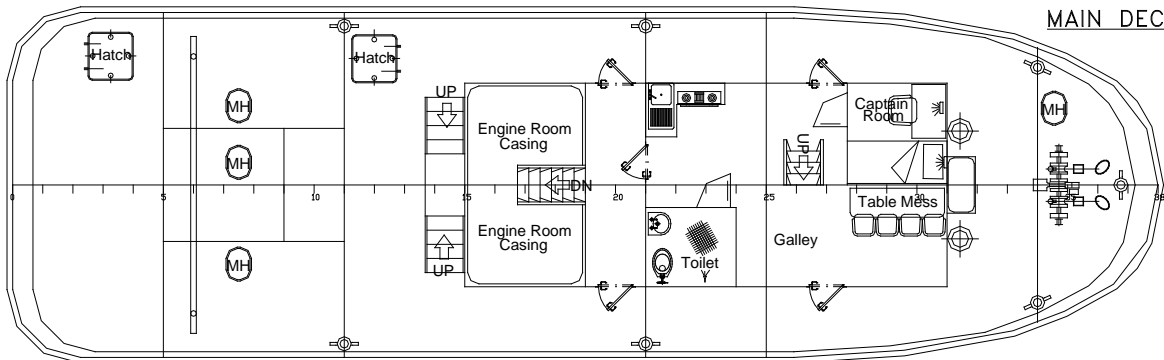
BRIDGE DECK



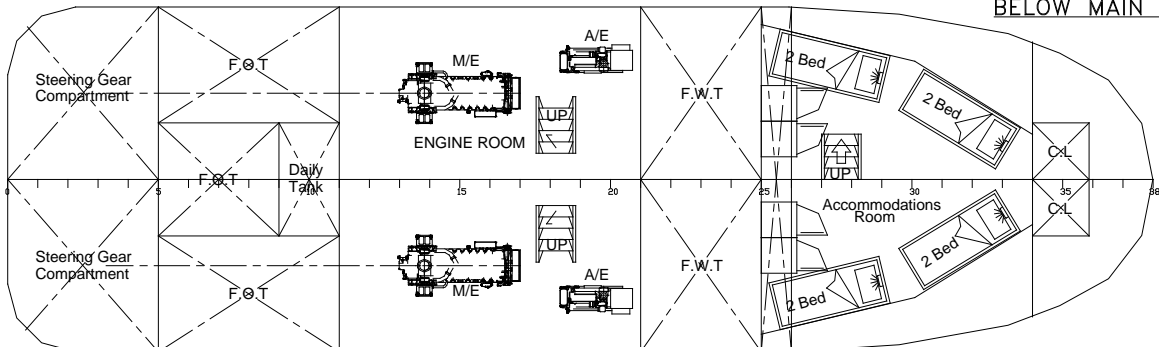
SIDE PROFILE



MAIN DECK



BELOW MAIN DECK



Note : The information shown is given in good faith without any warranties or conditions, express or implied, statutory or otherwise.