



SMS 90

OIL BARGE

PRINCIPAL PARTICULARS:

Year of built	: 1998
Classification	: BKI
Flag / Registry	: Indonesia/Jakarta
Construction	: Steel

DIMENSIONS :

Length	: 40.94 m
Breadth	: 12.20 m
Depth	: 2.44 m
Gross / Net Tonnage	: 359 / 211 Tons

MACHINERIES :

Cargo Pump	: 2 x Desmi Pump @2850 Rpm (100 M ³ /Hr) head pump 60 m
Pump Engine	: 2 x Hancock (Mitsubishi 6D-15)
Generator	: 1 x 15 kVA Yanmar TS 230R 1 x 3.5 kVA Yanmar TF65

TANK CAPACITIES :

Cargo Oil	: 900 m ³
-----------	----------------------

COMMUNICATION AND NAVIGATION :

VHF	: Standard CX 2345S
Satellite Phone	: Koden KGP 98
Handy Talkie	: Icom IC-M2A

OTHERS :

Bollard	: 8 (eight) double bollard
Towing Pads	: 2 (two Smit Towing Brackets)
Life Saving and Fire Fighting Equipments	: As per SOLAS requirements
Accommodation	: 3 pax

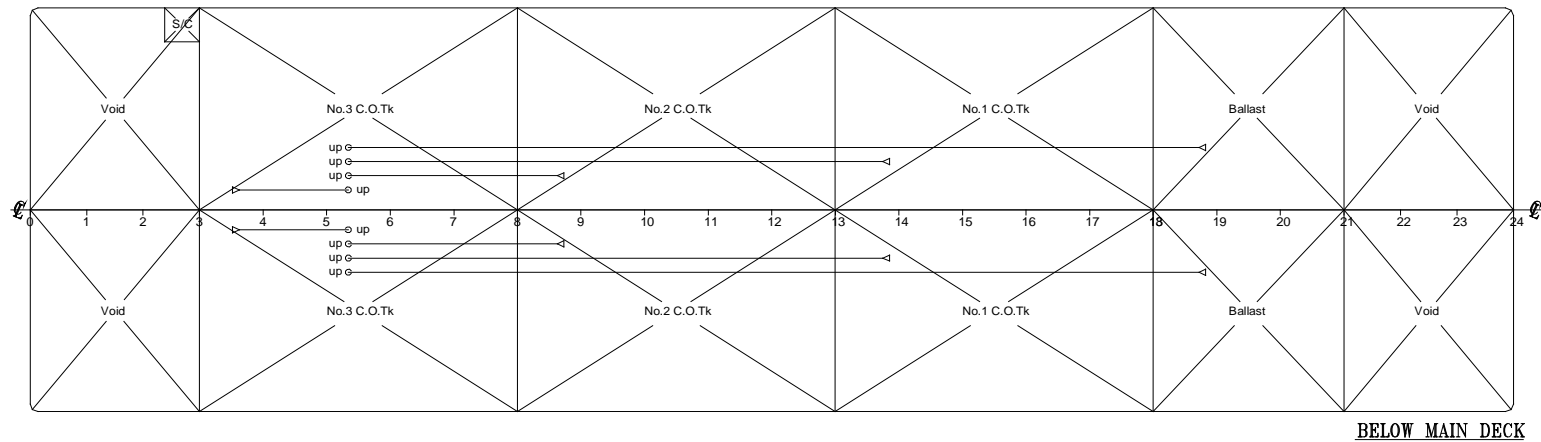
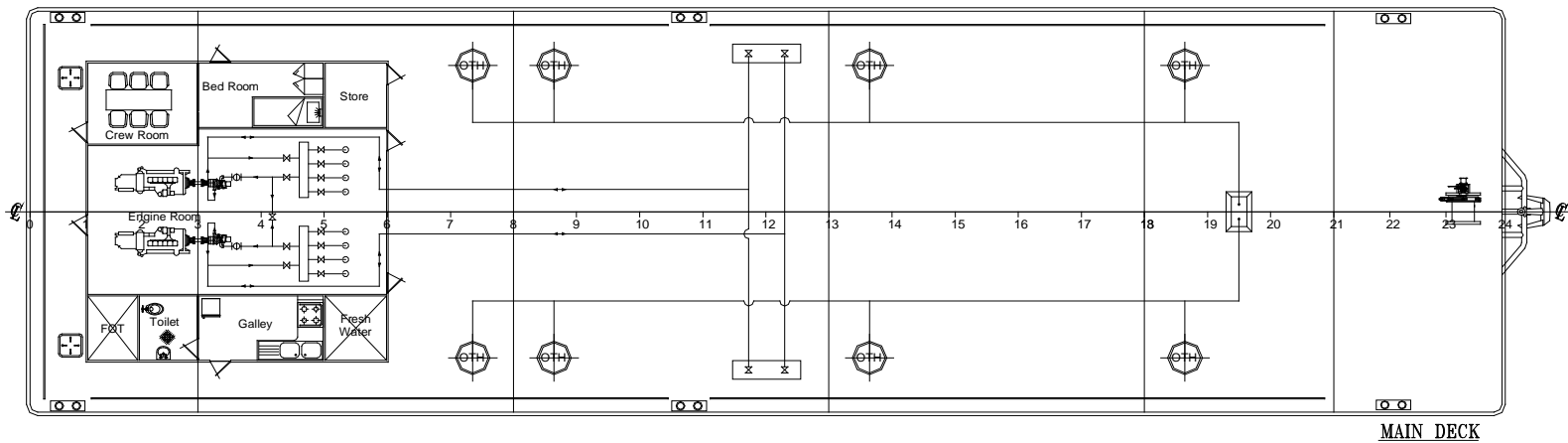
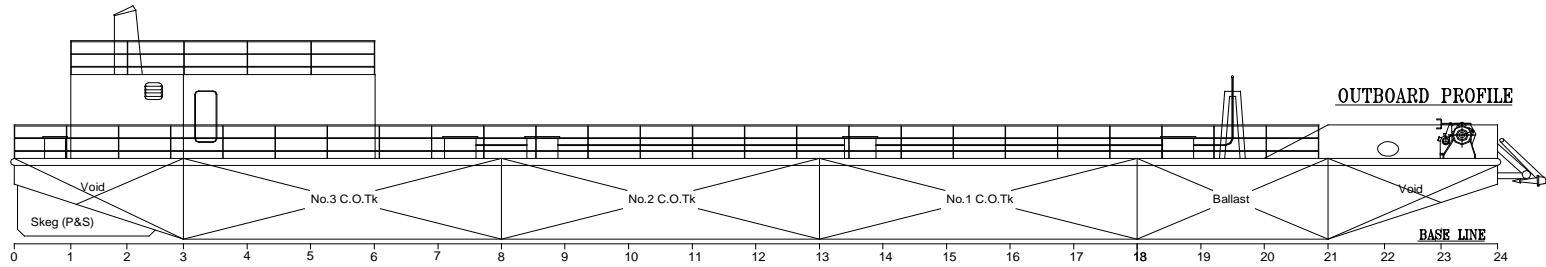
01.07.11 – Rev.0

Note : The information shown are given in good faith without any warranties or conditions, express or implied, statutory or otherwise.



ISM Code & ISPS
Compliant

OB SMS 90



Note : The information shown is given in good faith without any warranties or conditions, express or implied, statutory or otherwise.