

Tunas Terafulk - 1





TECHNICAL SPECIFICATION

Name of Vessel : TUNAS TERAFLUK-1
 Type of Vessel : Offshore Crew Boat
 Call Sign :
 Classification : Biro Klasifikasi Indonesia (BKI)
 Ship Speed : 22 knots

Builder : PT. TMD & PT. BTS
 Project No. : ABA09127
 Built : October 2009
 Flag : Indonesia
 IMO No. :

PRINCIPAL PARTICULARS

Length O.A. : 30.00 M
 Breadth Moulded : 7.00 M
 Depth Moulded : 3.40 M
 Design Draft (above keel) : 1.50 M
 Gross Tonnage : 179 GT
 Net Tonnage : 54 NT
 Deadweight : 50 T
 Free Deck Space : 10.3 m x 6 m (62 m2)

CARGO / TANK CAPACITY

Fuel Oil : 26.7 M3
 Fresh Water : 10.0 M3
 Water Ballast : 8.0 M3
 Deck Cargo at full tanks : 7.3 T

PUMPS & MACHINERY EQUIPMENTS

Fire/GS Pump : 30 m3/hr at 35m (KSB-Itur)
 Bilge/Ballast pump : 30 m3/hr at 35m (Hamworthy)
 Fresh Water Pump : 2 m3/hr at 20m (KSB-Itur)
 Oily Bilge Pump : 2 m3/hr at 20m (KSB-Itur)
 FO Transfer Pump : 2.5 m3/hr at 20m (KSB-Itur)
 Sewage Pump : 2.5 m3/hr at 20m (KSB-Itur)
 Em'cy Fire Pump : 17 m3/hr at 30m (KSB-Itur)
 Diesel Oil Generator : 1300 l/hr (Alfa Laval)
 Oil Water Separator : 0.25 m3/hr (Huanshui)

ACCOMMODATION & LIFE SAVING EQUIPMENT

Offshore Personnel : 70 person
 (Seating compartment)
 Crew (w/ berths) : 8 person
 Bunks : 2 x 1 men cabins
 1 x 2 men cabin
 1 x 4 men cabin
 3 x Toilets, 1 x medical room, 1 x mess room
 1 x Galley
 Life rafts : 8 x 20 men capacity
 Life Jackets : 80 for men, 8 for children
 Life Boat : 1 x 8 persons c/w 30HP outboard engine
 Other Life Saving Equipment : EEED, RHF, Smoke Signal,
 Parachute Signal Rocket, etc (acc to SOLAS)
 Fire Fighting System : In accordance to SOLAS rules

MACHINERY / PROPULSION

Main Engine : 3 x Catepillar C18 ACERT
 715 HP x 2100 rpm
 Gear Box : 3 x ZF550A ratio 1: 2.517
 Generators : 2 x Cummins 6 BTA 5.9
 80 kVA, 380V, 3 ph, 50Hz
 Propulsion Gears : 3 x four blades, fixed pitch (Mikado)
 Alu Bronze, 950mm dia, 1.084 pitch ratio

HULL

Type : Deep V with chine
 Hull material : Aluminium alloy 5083 (Plate) 6061 (extrusion)
 Hull Thickness : Keel 8, bottom 8, shell 6, deck 5, bulkhead 8
 Superstructure 4

DECK EQUIPMENT

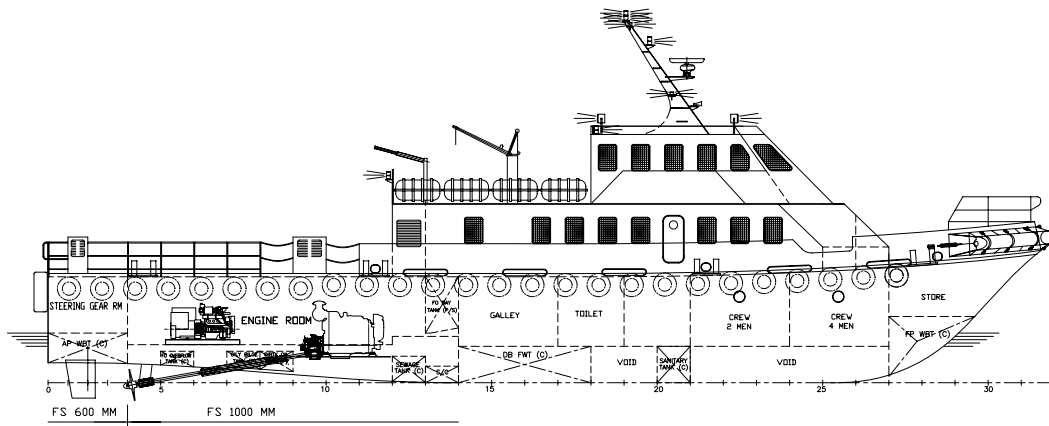
Anchors : HHP 1 x 135 kg
 Electrical Winch : 1 x 1.3 ton at 9m/min (Pindad)
 Moorings : 8 x 150 mm dia. Double-bitt

COMMUNICATION EQUIPMENT

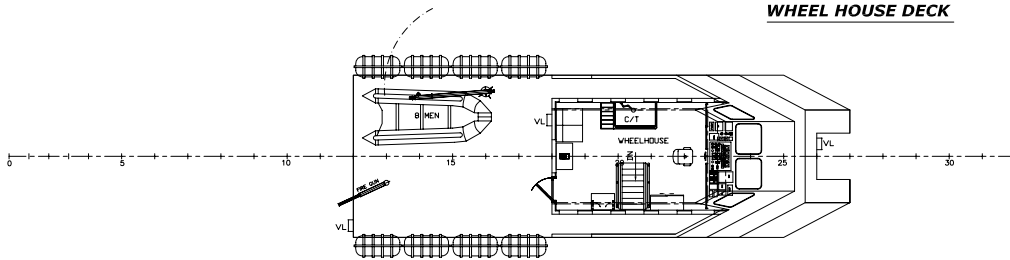
SSB Radiotelephone : 1 x 150 W (Furuno FS-1570)
 VHF/FM Radiotelephone : 1 x 25 W (Furuno FM-8800S)
 MF/HF DSC Terminal : 1 set
 Navtex Receiver : 1 set (Furuno NX-700A)
 EPIRB : 1 set (MT 403 FF)
 SART : 2 sets (S701)
 VHF radio : 3 x handheld VHF, 2.5W (ICOM IC-M34)
 Internal Communication : PA & intercom

NAVIGATION EQUIPMENT

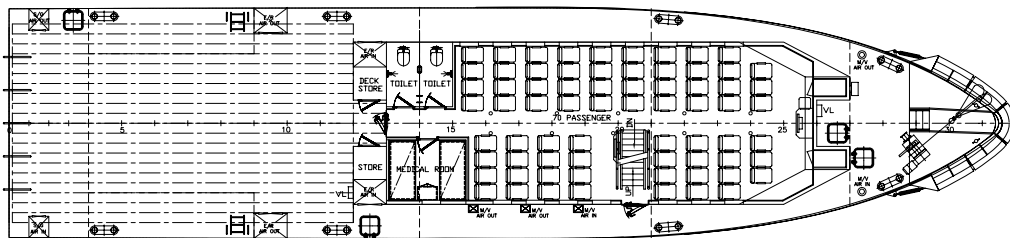
Echo Sounder : 1 set (Furuno FCV 620)
 X-Band Radar : 1 x 36nm range, 4kw (Furuno 1832)
 Compass : 1 x Magnetic Compass
 GPS : 1 x Marine GPS Waas Navigator (GP 32)
 Auto Pilot : 1 set (Anschutz)
 AIS : acc. to SOLAS & IMO (Furuno FA-150)
 Aldis Lamp : 1 set
 Search Lights : 2 x 1000 W



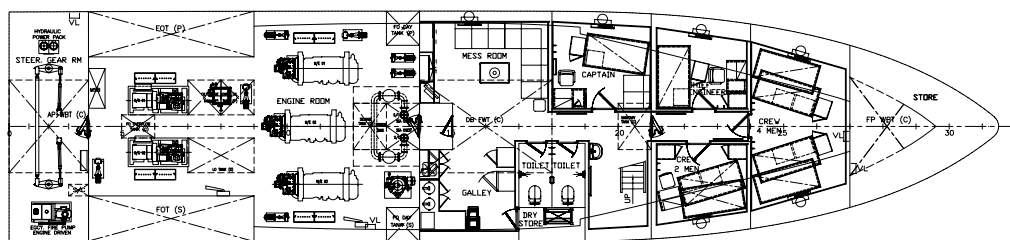
WHEEL HOUSE DECK



MAIN DECK



DOUBLE BOTTOM



PRINCIPAL PARTICULARS

- LENGTH O.A. _____ abt. 30.00 M
- LENGTH W.L. _____ 27.50 M
- BEAM MLD. _____ 7.00 M
- DEPTH _____ 3.20 M
- DRAFT _____ 1.50 M
- SPEED _____ abt. 22.0 Knots
- MAIN ENGINE POWER _____ 3 x 700 HP
- PASSENGERS _____ 70 Persons
- CREWS _____ 8 Persons
- CLEAR DECK _____ 10.3 x 6.0 M