



DP-0, 1/2 FiFi Offshore Service Vessel

The vessel is designed and engineered to support offshore installations and facilities. She is a shallow draft, DP-0, fire fighting vessel with full joystick and hold position control.



General

Year, place of built	2010
Class	Bureau Veritas
Dimensions	38.40 x 9.5 x 3.0 m
Clear Deck	20 x 9 m (180 m ²)
Speed	10 knots

Accommodation Total 23 bunks in 10 double and 3 single berth , fully air-conditioned cabins, each with en suit head and shower.

Passengers 16 passengers in 8 double berth cabins , each with en suit head and shower .

Cargo Capacity

Fuel Oil	155 Tons
Fresh Water	160 Tons
Deck Cargo	140 Tons

Machinery

Main engines	2 x 16V92 Detroit Diesels, each 800 bhp, total 1,600 bhp.
Propellers	2 x fixed pitch propellers.
Bow thruster	200 KW fixed pitch propeller, electric drive.
Steering	Twin independent steering systems type Jastram.
Generators	3 x Cummins Diesels each 90 KW, 220 – 380 v, 50 Hz.
Fuel Consumption	145 liters/hour sailing at full speed - 190 liters/hour in D.P. mode.
Fire Fighting	2 x fifi monitors + 2 pumps each driven by Scania engines, each delivering 950 m ³ /h at 80 m head and 130 psi.

Wheelhouse

Layout	Fore and aft consoles, 360° visibility.
Electronics	Full modern electronics including GMDSS A3 system, high speed Fleet Broadband with wireless access throughout the vessel.

D.P. System

Class Notation : DYNAPOS-SAM

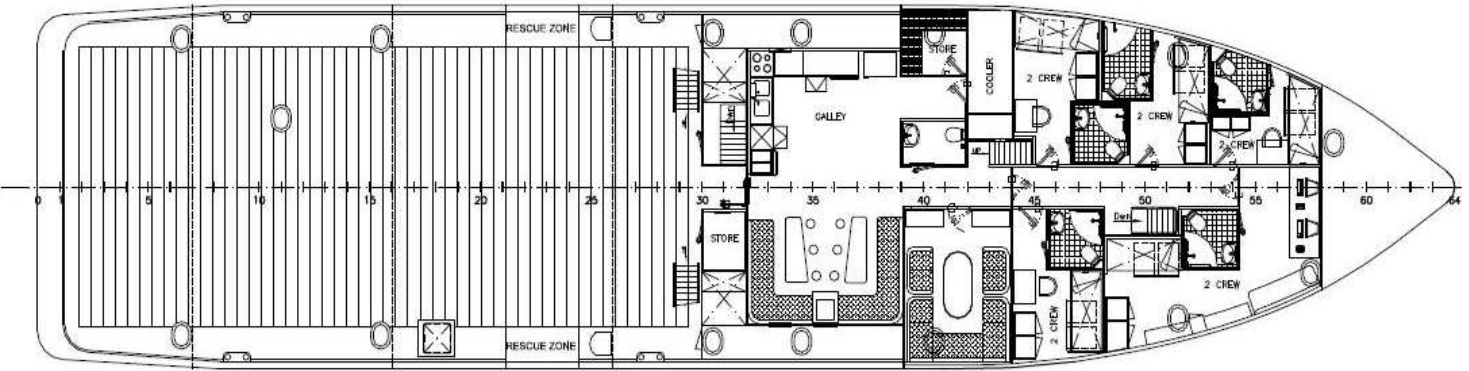
Navis NAV DP 4000 series allowing for :

- Automatic tracking, dynamic positioning and automatic speed control .
- Reference System 1 DGPS and 1 Laser Radar .
- Sensors: VRS, Gyrocompass, Wind sensor .
- In manual mode the vessel is controlled with joystick and knob at low speeds and in automatic mode the boat holds the given position.

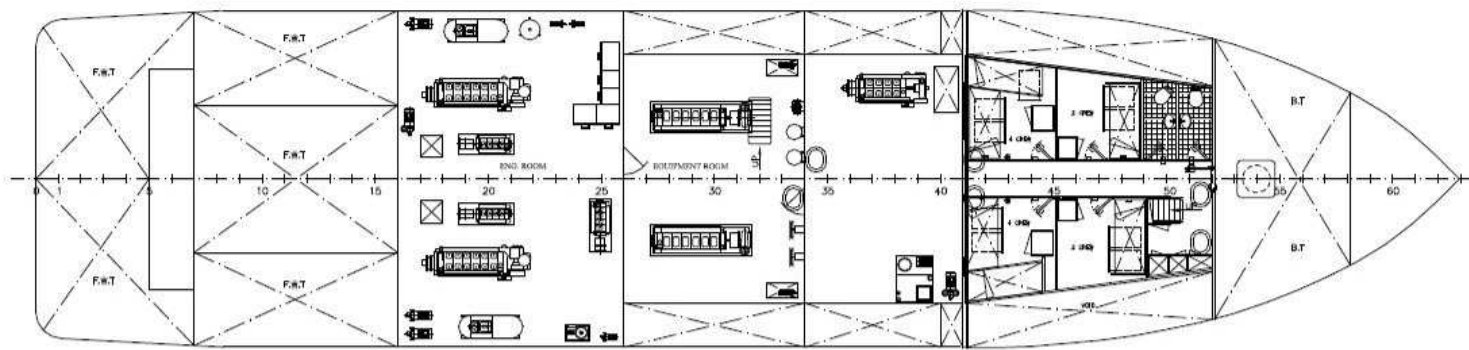




SIDE VIEW



MAIN DECK



UNDER DECK

